



Minor contribution of overstory transpiration to landscape evapotranspiration in boreal permafrost peatlands

Journal:	<i>Ecohydrology</i>
Manuscript ID	ECO-17-0085.R1
Wiley - Manuscript type:	Research Article
Date Submitted by the Author:	29-Aug-2017
Complete List of Authors:	Warren, Rebecca; Université de Montréal, Département de géographie Pappas, Christoforos; Université de Montréal, Département de géographie Helbig, Manuel; Université de Montréal, Département de géographie Chasmer, Laura; Wilfrid Laurier University, Cold Regions Research Centre; University of Lethbridge, Geography Berg, Aaron; University of Guelph, Department of Geography Baltzer, Jennifer; Wilfrid Laurier University Department of Biology Quinton, William; Cold Regions Research Centre; Wilfred Laurier University, Department of Geography and Environmental Studies Sonnentag, Oliver; Université de Montréal, Département de géographie
Keywords:	evapotranspiration, permafrost, wetlands, peatlands, eddy covariance, sap flow, boreal forest

SCHOLARONE™
Manuscripts

Minor contribution of overstory transpiration to landscape evapotranspiration in boreal permafrost peatlands

Rebecca K Warren^{1,2}, Christoforos Pappas¹, Manuel Helbig¹, Laura E Chasmer³, Aaron A Berg², Jennifer L Baltzer⁴, William L Quinton⁵, and Oliver Sonnentag¹

¹Université de Montréal
Département de géographie & Centre d'études nordiques
520 Chemin de la Côte Sainte-Catherine
Montréal, QC, H2V 2B8, Canada

²University of Guelph
Department of Geography
50 Stone Road East
Guelph, ON, N1G 2W1, Canada

³University of Lethbridge
Department of Geography
4401 University Drive
Lethbridge, Alberta, T1K 3M4, Canada

⁴Wilfrid Laurier University
Department of Biology
75 University Avenue West
Waterloo, ON, N2L 3C5, Canada

⁵Cold Regions Research Centre
Wilfrid Laurier University
75 University Avenue West
Waterloo, ON, N2L 3C5, Canada

Contact Email: rkathwarren@gmail.com

Keywords: evapotranspiration, sap flow, boreal forest, permafrost, wetlands, peatlands, eddy covariance

Submitted to Ecohydrology.

CONTRIBUTION OF OVERSTORY TRANSPIRATION IN A BOREAL PERMAFROST PEATLAND

Abstract. Evapotranspiration (ET) is a key component of the water cycle, whereby accurate partitioning of ET into evaporation and transpiration provides important information about the intrinsically coupled carbon, water, and energy fluxes. Currently, global estimates of partitioned evaporative and transpiration fluxes remain highly uncertain, especially for high-latitude ecosystems where measurements are scarce. Forested peat plateaus underlain by permafrost and surrounded by permafrost-free wetlands characterize approximately 60% ($7.0 \times 10^7 \text{ km}^2$) of Canadian peatlands. In this study, 22 *Picea mariana* (black spruce), a characteristic tree species of the boreal ecozone, were instrumented with sap flow sensors within the footprint of an eddy covariance tower measuring ET of a forest-wetland mosaic landscape. Sap flux density (J_s), together with remote sensing and in situ measurements of canopy structure, were used to scale J_s to overstory transpiration (T_{BS}). Black spruce trees growing in nutrient-poor permafrost peat soils were found to have lower mean J_s than those growing in mineral soils and contribute less than 1% to landscape ET. Climate change-induced forest loss and the expansion of wetlands may further minimize the contributions of T_{BS} to ET, and increase the contribution of standing water.

1. Introduction

Evapotranspiration (ET) is a key component of the water cycle and can be partitioned into biotic and abiotic components (e.g., Wang and Dickinson (2012)). The former consists of transpiration, i.e., the loss of water primarily from plant stomata, while the latter encompasses evaporation from plant interception, soil and open water evaporation, as well as snow sublimation (Lawrence *et al.*, 2007; Fatichi and Pappas, 2017). Accurate partitioning of ET into evaporation and transpiration components provides important information to validate and improve the simulation of carbon, water, and energy fluxes within terrestrial ecosystem models (Lawrence *et al.*, 2007;

CONTRIBUTION OF OVERSTORY TRANSPIRATION IN A BOREAL PERMAFROST PEATLAND

24 Wang and Dickinson, 2012; Fatichi *et al.*, 2015; Fatichi and Pappas, 2017). Increasingly,
25 accurate partitioning of water fluxes at regional scales are also required to reliably quantify and
26 manage water resources under rapidly changing climatic and environmental conditions (Bonan,
27 2008; Schaefer *et al.*, 2012). Numerous studies have partitioned ET into its component fluxes
28 (e.g., Jasechko *et al.* (2013), Good *et al.* (2015)). However, global estimates remain highly
29 uncertain (e.g., Coenders-Gerrits *et al.* (2014), Wang *et al.* (2014)). Moreover, most of the global
30 scale analyses focus on temperate regions, with ET partitioning in northern boreal and high-
31 latitude ecosystems remaining under-represented due to limited available information (e.g., Good
32 *et al.* (2015), Jasechko *et al.* (2013), Schlesinger and Jasechko (2014), Fatichi and Pappas
33 (2017)).

34 Peatlands are found throughout the boreal biome and are defined as ecosystems with
35 more than 40 cm of accumulated organic material. Distinct peatland classes can be defined based
36 on their hydrology, vegetation, and chemical composition (National Wetlands Working Group,
37 1997), and further described by the presence or absence of permafrost, i.e., perennially cryotic
38 ground (Zoltai and Tarnocai, 1975). Peatlands of high boreal and low subarctic regions comprise
39 58% of the total peatland area in Canada (Figure 1b). Such high-latitude peat landscapes are
40 often characterized by forested permafrost peat plateaus that are elevated approximately 1 m
41 above surrounding wetlands, mostly patterned and/or flat fens, and collapse-scar and/or flat bogs
42 (Zoltai and Tarnocai, 1975). Permafrost only occurs under peat plateaus, being absent from
43 adjacent fens and bogs.

44 Climate change-induced permafrost thaw could potentially to influence boreal and
45 subarctic peatland land-surface interactions at the regional scale (Grosse *et al.*, 2016). Along its
46 southern limit, permafrost is relatively warm and thin (Smith *et al.*, 2005). In recent decades,

CONTRIBUTION OF OVERSTORY TRANSPIRATION IN A BOREAL PERMAFROST PEATLAND

warming air temperatures have accelerated the rate of permafrost thaw (Baltzer *et al.*, 2014; Chasmer and Hopkinson, 2016; Grosse *et al.*, 2016; Quinton *et al.*, 2011) impacting forest composition, structure and function (Baltzer *et al.*, 2014; Jorgenson *et al.*, 2013; Lara *et al.*, 2016), and thus carbon, water and energy fluxes (Grosse *et al.*, 2016; Helbig *et al.*, 2016b; Turetsky *et al.*, 2002). Thawing sporadic discontinuous permafrost, i.e., permafrost occurring on <50% of the landscape, has been shown to induce surface subsidence, thereby replacing forests (i.e. peat plateaus) with permafrost-free wetlands (referring to fens and bogs in this study) (Baltzer *et al.*, 2014; Jorgenson *et al.*, 2013; Lara *et al.*, 2016). The post-thaw wetland water table is close to the ground surface allowing open water or energy-limited ET, in contrast to the raised peat plateaus that are water-limited. Land cover conversion from mostly black spruce dominated peat plateaus with permafrost to treeless, permafrost-free wetlands may therefore increase landscape ET across parts of northwestern Canada (Helbig *et al.*, 2016b).

Here, we use tree-level sap flux density measurements (J_s ; i.e., sap flow per unit of sapwood area) of black spruce, a widespread boreal tree species, together with site-specific tree allometry and a canopy height model (CHM) derived from Light Detection and Ranging (LiDAR) to estimate overstory transpiration over a boreal peat landscape with sporadic permafrost in northwestern Canada. Upscaled overstory transpiration is then compared with landscape ET estimates from concurrent eddy covariance measurements. The objectives of this study are (i) to quantify the contribution of black spruce transpiration (T_{BS}) to landscape ET, and (ii) to discuss the impacts of a shift in T_{BS}/ET as a result of permafrost thaw-induced boreal forest loss and wetland expansion.

2. Materials and methods

CONTRIBUTION OF OVERSTORY TRANSPIRATION IN A BOREAL PERMAFROST PEATLAND

2.1. Study site

The study site is a boreal forest stand of *ca.* 0.75 km² on permafrost peat plateaus with interspersed permafrost-free bogs and fens, situated in the southern portion of the Scotty Creek watershed, Northwest Territories (NT), Canada (61.17°83'N, 121.17°25'W) (Figure 1a). Scotty Creek is a hydrologically well-characterized watershed south of Fort Simpson, NT under the influence of rapidly thawing sporadic permafrost (Quinton *et al.*, 2011). The climate of the region is characterized by short summers and long, cold winters with a mean annual air temperature and a total precipitation of -2.8 °C and 390 mm, respectively (1981 – 2010 climate normals, Fort Simpson, Environment Canada, 2014). Mean annual air temperature has increased since the 1970's, contributing to accelerated permafrost thaw increasing from 0.19% (of total basin area) per year (1970 - 2000) to 0.58% per year (2000 - 2015) (Chasmer and Hopkinson, 2016). The increasing rate of permafrost disappearance has caused expansion of bogs and fens at the expense of forested peat plateaus at Scotty Creek, and across the southern Taiga Plains ecozone (Baltzer *et al.*, 2014; Chasmer and Hopkinson, 2016; Helbig *et al.*, 2016b). Similar landscapes to Scotty Creek are widespread throughout the Canadian and Russian boreal ecozone (Olefeldt *et al.*, 2016), with a reported 21% of the global boreal forest classified as lowland forest overlying permafrost or thick overburden (Helbig *et al.*, 2016a).

Forested permafrost peat plateau vegetation consists of a *Picea mariana* (black spruce) dominated overstory and sporadic *Larix laricina* (tamarack), which combined constitute >95% of stems >1 cm (J L Baltzer, *unpublished data*). *Picea glauca* (white spruce), *Pinus banksiana* (jack pine), *Populus tremuloides* (trembling aspen), and *Betula neoalaskana* (Alaskan paper birch) also occasionally occur. The understory is composed of *Betula spp.* (birch) shrubs, *Rhododendron groenlandicum* (bog Labrador tea), *Andromeda polifolia* (bog rosemary), *Cladina*

CONTRIBUTION OF OVERSTORY TRANSPIRATION IN A BOREAL PERMAFROST PEATLAND

93 *spp.* (reindeer lichen), *Pleurozium schreberi* (feather moss) and *Sphagnum spp.* (Garon-
 94 Labrecque *et al.*, 2015). The average tree height (H) is $2.2 \text{ m} \pm 1.2$ and stand density is *ca.* 0.12
 95 stems m^{-2} (peat plateaus = $0.18 \text{ stems m}^{-2}$, bogs = $0.07 \text{ stems m}^{-2}$, fens = $0.03 \text{ stems m}^{-2}$), as
 96 extracted from the CHM. As the CHM does not differentiate between different tree species, all
 97 trees were assumed to be black spruce, which dominate the landscape (*ca.* 83%, J L Baltzer,
 98 *unpublished data*). Leaf Area Index (LAI; LAI-2200 Plant Canopy Analyzer, Li-COR
 99 Biosciences, Lincoln, NE, USA) was estimated (Sonnentag *et al.*, 2007) for over- ($0.61 \text{ m}^2 \text{ m}^{-2} \pm$
 100 0.34 (one standard deviation)) and understory ($0.68 \text{ m}^2 \text{ m}^{-2} \pm 0.25$) vegetation ($n = 31$), in July
 101 2013. Ericaceous shrubs and *Sphagnum spp.* generally dominate bogs, while shrubs, sedges,
 102 grasses, and brown mosses dominate fens (Garon-Labrecque *et al.*, 2015).

104 2.2. Sap flux density measurements

105 During a portion the 2013 growing season (May 31 to July 13), 22 black spruce trees of similar
 106 size (10.0 - 11.9 cm diameter at breast height) were instrumented at breast height (1.3 m) with
 107 heat-ratio-method sap flow sensors (HRM; SFM1 Sap Flow Meter, ICT International, Armidale,
 108 New South Wales, Australia; following Burgess *et al.* (2001)). All trees were located in the
 109 interior of peat plateaus, avoiding edges where tree function has been shown to be reduced
 110 (Patankar *et al.*, 2015). These trees were selected to span the range of environmental conditions
 111 (e.g. nutrient gradient) present at Scotty Creek and thus capture within-site variability in sap
 112 flow. Most of the instrumented trees were located within or near the landscape eddy covariance
 113 flux tower footprint (Figure 1a). Heat pulse sap velocity (V_s , cm hr^{-1}) was calculated from the
 114 Sap Flow Tool software (ICT International Armidale, New South Wales, Australia). Sap velocity
 115 measured at the first thermistor (length equal to 12.5 mm) was used in our study, as the second

CONTRIBUTION OF OVERSTORY TRANSPIRATION IN A BOREAL PERMAFROST PEATLAND

thermistor (length equal to 27.5 mm) was located in non-conducting wood tissues (heartwood). J_s ($\text{gH}_2\text{O m}^{-2} \text{ s}^{-1}$) was derived from V_s every 30 minutes, assuming one unit of sapwood area and water density was equal to 1000 kg m^{-3} .

2.3. Eddy covariance and supporting measurements

Boreal forest-wetland “landscape” ET (ET_{LAND} ; 2013 – 2016) and “wetland” ET (ET_{BOG} ; 2014 – 2016) were obtained from nested eddy covariance measurements (Helbig *et al.*, 2016b), installed in August 2012 and 2013 respectively. Two towers were equipped with the same flux and micrometeorological instrumentation, including an infrared $\text{CO}_2/\text{H}_2\text{O}$ gas analyzer (EC150; Campbell Scientific Inc., Logan, UT, USA) and a three-dimensional sonic anemometer (CSAT3A; Campbell Scientific Inc.). These were mounted on a 15-m tower located on the forested peat plateau, and approximately 100 m north at the bog site on a 2 m tripod, respectively. A detailed description of the eddy covariance set-up at Scotty Creek is given by Helbig *et al.* (2016b). The 90% landscape and bog flux footprints were derived from a 2D footprint parameterization (Kljun *et al.*, 2015), which were used to quantify the mean growing season ET flux footprint contributions from forested peat plateaus ($a = 51 \%$) and wetlands ($b = 49 \%$) (see equation 1 below). For the landscape tower, all fluxes within the footprint with $>5\%$ contributions from the lake were filtered. Contributions from fens never exceeded 10%, and were aggregated with the bog contribution for a total wetland flux. For the wetland tower, all fluxes with contribution greater than 5% from the forest were similarly filtered. To estimate ET_{BOG} for 2013, when only ET_{LAND} and sap flux density were measured, we applied a linear relationship between concurrent ET_{LAND} and ET_{BOG} measurements during the other years following Helbig *et al.* (2016b). We used the mean slope and intercept for the three-year period: 1.26 ± 0.18 and -

CONTRIBUTION OF OVERSTORY TRANSPIRATION IN A BOREAL PERMAFROST PEATLAND

139 $1.68 \pm 0.24 \text{ mg H}_2\text{O m}^{-2} \text{ s}^{-1}$ ($n = 3$), respectively (see Supplementary material Figure S1).

140 Measured ET_{LAND} in 2013 was then partitioned to derive forest (i.e., peat plateau) ET (ET_{FOR})

141 using the mean weighted flux footprint contributions for the two land cover types (forest [FOR]

142 and wetland [BOG]) and the derived ET_{BOG} :

$$\text{ET}_{\text{LAND}} = a\text{ET}_{\text{FOR}} + b\text{ET}_{\text{BOG}} \quad (1)$$

143 Photosynthetically active radiation (PAR, $\mu\text{mol m}^{-2} \text{ s}^{-1}$; PQS1, Kipp and Zonen, Delft, the

144 Netherlands), vapour pressure deficit (VPD, hPa; Rotronic AG, Bassersdorf, Switzerland), and

145 air temperature ($^{\circ}\text{C}$; HC2-S3, Rotronic AG, Bassersdorf, Switzerland) were measured at the

146 landscape tower above the forest canopy at 30-minute intervals. Precipitation (mm) was also

147 measured at 30-minute intervals using a tipping bucket rain gauge (TR-5251, Texas Electronics

148 Inc., Dallas, Texas, USA) located within the landscape flux footprint.

149

150 *2.4. Allometric relationships*

151 Allometric field surveys in the landscape flux footprint were conducted in 2012 ($n = 100$), 2015

152 ($n = 51$) and 2016 ($n = 47$) to establish the relationship between black spruce H (m) and DBH

153 (cm). Both H and DBH were non-normally distributed and heteroscedastic, and therefore

154 subsequently log-transformed. A site-specific relationship (Figure 2) was developed to relate H

155 and DBH ($\text{DBH} = 10^{0.067} \times H^{0.989}$, $r^2 = 0.67$, $p < 0.001$, $n = 198$). A correction factor of 1.054

156 was applied to account for the systematic bias to the base logarithm introduced by the log-

157 transformation (Sprugel, 1983).

158

159 The allometric relationship between DBH and sapwood area (A_s , cm^2) was similarly log-

160 transformed using data from the 2016 survey. Sapwood thickness was identified visually after

CONTRIBUTION OF OVERSTORY TRANSPIRATION IN A BOREAL PERMAFROST PEATLAND

examining tree cores against the sunlight (mean 10.0 mm +/- 6.1, $n = 47$). Sapwood was relatively wet and translucent in comparison to heartwood. This relationship was best described by the function $A_S = 10^{-0.633} \times \text{DBH}^{1.848}$ ($r^2 = 0.76$, $p < 0.001$) with a correction factor of 1.059 (Figure 2b).

2.5 Upscaling tree-level sap flux density to landscape evapotranspiration

A LiDAR dataset of Scotty Creek at 1 m² spatial resolution was acquired in 2010 and used to produce a CHM (Chasmer *et al.*, 2014; Chasmer *et al.*, 2011). Grid cells with canopy heights <1 m were excluded from the analysis as these represent understory and ground surface vegetation structures. Per 1 m² CHM grid cell, sap flux density was scaled from individual tree- (J_S) to overstory- (T_{BS}), and thus landscape-level, based on the equation:

$$T_{BS} = J_S \frac{A_S}{A_G} \quad (2)$$

where J_S is the average half-hourly sap flux density (gH₂O m⁻² 30 min⁻¹), A_S is the sapwood area per grid cell (m²), and A_G is the grid cell area (m²). We assume a maximum stem density of one tree per m², i.e., a CHM cell cannot contain more than one individual, which is supported by a stand density of <1 stem m⁻². Sapwood area was calculated from the footprint-specific allometric relationships between H , DBH, and A_S using the CHM. To address potential uncertainties in sapwood depth measurements in resinous tree species (e.g., Van Herk *et al.* (2011)), we examined also an hypothetical scenario where A_S equalled the cross-sectional area (A_{CS}) for trees with a DBH ≤ 5.4 cm (i.e., the average of the studied trees in Van Herk *et al.* (2011)) and $A_S = 0.5A_{CS}$ for trees with a DBH ≥ 5.4 cm. This approach allowed us to obtain an upper limit of scaled T_{BS} and of its contribution to ET_{LAND}.

CONTRIBUTION OF OVERSTORY TRANSPIRATION IN A BOREAL PERMAFROST PEATLAND

183 *2.6 Uncertainty analysis*

184 Possible sources of uncertainty in T_{BS} are (i) an underestimation of H from the CHM due to
 185 low/no returns from the apices of narrow black spruce crowns, (ii) uncertainties in the derived
 186 allometric equations, and (iii) variability of J_S between trees. These uncertainties were addressed
 187 using a Monte Carlo uncertainty analysis (MC-UA) of the scaling procedure. LiDAR-derived
 188 canopy height was assumed to be approximately 10% lower than measured tree height as found
 189 by Hopkinson *et al.* (2005). The CHM uncertainties were implemented in the MC-UA by
 190 replacing each grid cell value with a canopy height sampled from a normal distribution with
 191 mean equal to the original CHM value of this grid cell and standard deviation of 10%. The
 192 allometric relationships derived in Figure 2 were applied to the CHM to estimate transpiration
 193 fluxes from the area within the flux footprint, and included the range of error associated with
 194 underestimated canopy height (see Supplementary Material Figures S3-6). Uncertainties arising
 195 from using mean J_S were addressed by randomly sampling from a normal distribution with the
 196 standard deviation of J_S from all instrumented trees per time step. Per MC-UA iteration (100 in
 197 total), T_{BS} was calculated for each CHM grid cell using equation 2 and summed to determine
 198 total footprint T_{BS} . Black spruce transpiration for the footprint is given as the mean T_{BS} of the
 199 iterations +/- the standard deviation.

200

201 **3. Results and discussion**202 *3.1. Daily and seasonal patterns of sap flux density*

203 Total precipitation at Scotty Creek during the study period (May 31 to July 13 2013) amounted
 204 to 88.8 mm, with mean air temperature of 17.6 °C (minimum = 4.1 °C, maximum = 32.2 °C)
 205 (Figures 3a,f). Maximum air temperature and VPD occurred late-June to early-July, while

CONTRIBUTION OF OVERSTORY TRANSPIRATION IN A BOREAL PERMAFROST PEATLAND

maximum PAR was observed early-June to early-July (Figures 3d-f). Black spruce J_S was greater than zero throughout the day, most likely due to the long photoperiod (~22 h) (Patankar *et al.* 2015; Figures 3b-e). Maximum J_S occurred approximately a month after snowmelt in early-May (Connon *et al.*, 2015) and slowly declined over the remainder of the growing season, with the exception of days following rainfall (Figures 3a,b). On days with larger precipitation events (Figure 3a), J_S approached zero and differed from the typical diurnal pattern (Figure 3b). A similar daily and seasonal flux pattern was observed for ET_{LAND} (Figure 3c).

In comparison to previous black spruce sap flux density studies (Table 1), black spruce at Scotty Creek had lower mean daily J_S (minimum = 0.1, mean = 8.0, maximum = 21.7 in $gH_2O\ m^{-2}\ s^{-1}$). Angstmann *et al.* (2013) found similarly low mean daytime J_S in black spruce growing in peat soils. In contrast, J_S reported for smaller-DBH black spruce growing in mineral soils were about ten times higher (Ewers *et al.*, 2005; Van Herk *et al.*, 2011). This difference may be due to a number of environmental factors controlling the magnitude of J_S , including stand structure (Angstmann *et al.*, 2012; Ewers *et al.*, 2005), moisture gradients (Angstmann *et al.*, 2013; Bovard *et al.*, 2005; Oren and Pataki, 2001), soil nutrients, and presence or absence of permafrost (Iijima *et al.*, 2014; Patankar *et al.*, 2015). In particular, Scotty Creek has the lowest overstory LAI, canopy height and stand density among the reported studies in Table 1, and is additionally underlain by nutrient-poor, peat soils. Low nitrogen availability of similar black spruce forests growing on permafrost-affected peat soils in Alaska has been recently reported Finger *et al.* (2016). Additionally, black spruce rooting depth is commonly limited to the top 20 cm of soil (Finger *et al.*, 2016; Gale and Grigal, 1987) controlling access to water as the growing season progresses (Patankar *et al.*, 2015; Sniderhan and Baltzer, 2016). It should also be noted that J_S may also vary depending on measuring technique, e.g. HRM (this study), versus Granier-

CONTRIBUTION OF OVERSTORY TRANSPIRATION IN A BOREAL PERMAFROST PEATLAND

style sensors (Table 1) and/or data corrections applied *a posteriori* to account for possible contact of the sap flow probes with non conductive tissues (e.g., Steppe *et al.* (2010)).

3.3. Evapotranspiration and black spruce transpiration

Mean daily ET_{LAND} (+/- one standard deviation) per m^2 of the footprint in 2013 was 2.33 mm d^{-1} +/- 0.77 and was partitioned into $ET_{FOR} = 1.72 \text{ mm d}^{-1}$ +/- 0.57 and $ET_{BOG} = 2.92 \text{ mm d}^{-1}$ +/- 0.97 . Mean daily T_{BS} was 0.02 mm d^{-1} +/- <0.01 composed of 0.03 mm d^{-1} +/- 0.01 from forested areas (i.e., peat plateaus, T_{BS-FOR}) and $<0.01 \text{ mm d}^{-1}$ from wetlands (T_{BS-BOG}). Overall, T_{BS} contributed 0.9% to ET_{LAND} (1.9% to T_{BS-FOR} and 0.4% to T_{BS-BOG} ; Figure 4). The upper limit of T_{BS} and of its contribution to ET_{LAND} indicated that T_{BS} may account for up to 2.1% of ET_{LAND} , and T_{BS-FOR} for 4.5% of ET_{FOR} ; however, T_{BS} remains a minor contribution to ET. These findings suggest that black spruce forests growing on peat soils, especially with permafrost, may contribute much less to ET than their mineral soil counterparts (Table 1). In contrast to sites with greater canopy coverage, the sparse tree density at Scotty Creek allows plenty of light to penetrate into the black spruce canopy and to reach the understory layer (Chasmer *et al.*, 2011), potentially allowing understory transpiration (i.e. Labrador tea, birch, moss, lichen) to play a larger role in the landscape water balance (Lafleur, 1992).

3.3. Climate change and evapotranspiration in boreal permafrost peatlands

Accelerated rates of permafrost thaw, and continued climate warming have already resulted in landscape changes through forest loss and the expansion of wetlands along the southern limit of permafrost (Baltzer *et al.*, 2014; Helbig *et al.*, 2016a). For example, the recent study of Chasmer and Hopkinson (2016) projects a complete loss of permafrost from the Scotty Creek basin by *ca.*

CONTRIBUTION OF OVERSTORY TRANSPIRATION IN A BOREAL PERMAFROST PEATLAND

2044. Helbig *et al.* (2016b) found that with permafrost thaw-induced wetland expansion the partitioning of available energy will shift from sensible heat flux more toward to latent heat flux and thus ET, as the flux from a bog-only flux footprint is 1.54 times greater than the landscape flux footprint (ca. 50% wetland and ca. 50% forest). Continued wetland expansion across these regions would increase ET_{LAND} , mainly due to an increase in open water and moss evaporation, and even further minimize the contribution of black spruce to the water balance. Additionally, root sap flux density has been shown to be significantly lower in black spruce trees near peat plateau edges in the peat plateau-wetland transition zone compared with interior peat plateau trees (Baltzer *et al.*, 2014; Patankar *et al.*, 2015). Thus, it may be surmised that with the increase in both wetland expansion and forest fragmentation, combined with growth reductions that have been attributed to active layer thickening (Sniderhan and Baltzer, 2016), the contribution of T_{BS} to ET_{LAND} will even further decrease. However, in contrast to other forested systems, loss of trees in a permafrost boreal peat landscape likely does not directly alter landscape ET, or account for the observed increase in basin runoff, attributed to the increasingly interconnected wetland features (Connon *et al.*, 2014) that promote ET. Additionally, while forest loss is not likely to significantly alter water fluxes directly, the associated collapse of peat plateaus with permafrost thaw is expected to increase water availability to the moss surface and enhance total evaporation, as demonstrated by the systematic difference in ET_{LAND} and ET_{BOG} in this study, and the findings of Helbig *et al.* (2016b). Increased drainage and a future drier state in this system may permit the recovery of forests, and potentially enhance the contribution of overstory transpiration to ET.

4. Conclusion

CONTRIBUTION OF OVERSTORY TRANSPIRATION IN A BOREAL PERMAFROST PEATLAND

274 In this study, we quantified the contribution of black spruce growing on permafrost peat soils to
275 the overall water flux for a boreal peat landscape. We demonstrate that, while overstory
276 vegetation (i.e., black spruce) is not a significant contributor ($<1\%$ of landscape ET flux), the
277 loss of black spruce due to accelerating permafrost thaw could alter the partitioning of energy
278 within this broad landscape. When compared with black spruce growing on mineral soils and/or
279 at lower latitudes, black spruce growing on peat plateaus with permafrost has the lowest sap
280 flow, likely resulting in the minor contribution of overstory to landscape ET. As forested
281 permafrost peat plateaus along the southern limit of permafrost transition into permafrost-free
282 and treeless wetland environments (i.e., bogs and fens), it will become increasingly important to
283 quantify contributions from various shrub species, peatland sedges and mosses, and open water
284 areas.

285
Acknowledgements. The authors are grateful to C Hopkinson for acquisition, processing and
287 partial subsidy of the airborne LiDAR data at Scotty Creek. R K Warren was funded in part by
288 the Ontario Graduate Scholarship (OGS) and Northern Scientific Training Program (NSTP). C
289 Pappas acknowledges the support of the Stavros Niarchos Foundation and the ETH Zurich
290 Foundation (grant P2EZP2_162293) through a Swiss National Science Foundation (SNSF) Early
291 Postdoc.Mobility fellowship. M Helbig was funded through graduate student scholarships
292 provided by the Fonds de recherche du Québec – Nature et technologies (FRQNT) and the
293 German Academic Exchange Service (DAAD). L Chasmer has been funded in part by Alberta
294 Innovates Technology Futures. Funding for this research was awarded to (1) A A Berg by the
295 Natural Sciences and Engineering Research Council (NSERC), (2) J L Baltzer by the Canadian
296 Foundation for Innovation Leaders Opportunity Fund (CFI LOF), the Ontario Ministry of

CONTRIBUTION OF OVERSTORY TRANSPIRATION IN A BOREAL PERMAFROST PEATLAND

1
2
3 297 Research and Innovation Early Researcher Award and the NSERC Changing Cold Regions
4
5 298 Network, (3) W L Quinton by a NSERC CRD grant and, (4) O Sonnentag by the Canada
6
7
8 299 Research Chairs, CFI LOF and NSERC Discovery Grant programs. We are grateful for the
9
10 300 support of the Liidlil Kue First Nation and Jean-Marie River First Nation for their support of the
11
12 301 Scotty Creek Research Station, as well Rajit Patankar for his assistance during the 2013 field
13
14
15 302 season. We acknowledge the importance of the support provided by the Government of the
16
17 303 Northwest Territories – Wilfrid Laurier University Partnership Agreement. This study was part
18
19
20 304 of the Arctic Boreal Vulnerability Experiment (ABOVE). We declare there is no conflict of
21
22 305 interest.
23
24
25
26
27
28
29
30
31
32
33
34
35
36
37
38
39
40
41
42
43
44
45
46
47
48
49
50
51
52
53
54
55
56
57
58
59
60

CONTRIBUTION OF OVERSTORY TRANSPIRATION IN A BOREAL PERMAFROST PEATLAND

References

- Angstmann, J. L., Ewers, B. E., Barber, J., & Kwon, H. (2013). Testing transpiration controls by quantifying spatial variability along a boreal black spruce forest drainage gradient. *Ecohydrology*, 6, 783–793. <http://doi.org/10.1002/eco.1300>
- Angstmann, J. L., Ewers, B. E., & Kwon, H. (2012). Size-mediated tree transpiration along soil drainage gradients in a boreal black spruce forest wildfire chronosequence. *Tree Physiology*, 32, 599–611. <http://doi.org/10.1093/treephys/tps021>
- Baltzer, J. L., Veness, T., Chasmer, L. E., Sniderhan, A. E., & Quinton, W. L. (2014). Forests on thawing permafrost: fragmentation, edge effects, and net forest loss. *Global Change Biology*, 824–834. <http://doi.org/10.1111/gcb.12349>
- Bonan, G. B. (2008). Forests and climate change: forcings, feedbacks, and the climate benefits of forests. *Science*, 320, 1444–1449. <http://doi.org/10.1126/science.1155121>
- Bovard, B. D., Curtis, P. S., Vogel, C. S., Su, H.-B., & Schmid, H. P. (2005). Environmental controls on sap flow in a northern hardwood forest. *Tree Physiology*, 25, 31–38.
- Burgess, S., Adams, M. A., Turner, N. C., Beverly, C. R., Ong, C. K., Khan, A. A., & Bleby, T. M. (2001). An improved heat pulse method to measure low and reverse rates of sap flow in woody plants. *Tree Physiology*, 21, 589–98.
- Chasmer, L. E., & Hopkinson, C. (2016). Threshold loss of discontinuous permafrost and landscape evolution. *Global Change Biology*, 1–15. <http://doi.org/10.1111/gcb.13537>
- Chasmer, L. E., Hopkinson, C., Veness, T., Quinton, W. L., & Baltzer, J. L. (2014). A decision-tree classification for low-lying complex land cover types within the zone of discontinuous permafrost. *Remote Sensing of Environment*, 143, 73–84. <http://doi.org/10.1016/j.rse.2013.12.016>

CONTRIBUTION OF OVERSTORY TRANSPIRATION IN A BOREAL PERMAFROST PEATLAND

Chasmer, L. E., Quinton, W. L., Hopkinson, C., Petrone, R. M., & Whittington, P. (2011). Vegetation canopy and radiation controls on permafrost plateau evolution within the discontinuous permafrost zone, Northwest Territories, Canada. *Permafrost and Periglacial Processes*, 22, 199–213. <http://doi.org/10.1002/ppp.724>

Coenders-Gerrits, A. M. J., van der Ent, R. J., Bogaard, T. A., Wang-Erlandsson, L., Hrachowitz, M., & Savenije, H. H. G. (2014). Uncertainties in transpiration estimates. *Nature*, 506, E1-2. <http://doi.org/10.1038/nature12925>

Connon, R. F., Quinton, W. L., Craig, J. R., & Hayashi, M. (2014). Changing hydrologic connectivity due to permafrost thaw in the lower Liard River valley, NWT, Canada. *Hydrological Processes*. <http://doi.org/10.1002/hyp.10206>

Environment Canada. (2014). *Canadian Climate Normals: 1981–2010*. Available at: http://climate.weather.gc.ca/climate_normals/index_e.html (accessed 7 February 2017).

Ewers, B. E., Gower, S. T., Bond-Lamberty, B., & Wang, C. K. (2005). Effects of stand age and tree species on canopy transpiration and average stomatal conductance of boreal forests. *Plant, Cell and Environment*, 28, 660–678. <http://doi.org/10.1111/j.1365-3040.2005.01312.x>

Fatichi, S., and C. Pappas. (2017). Constrained variability of modeled T:ET ratio across biomes. *Geophysical Research Letters*, 44, doi:10.1002/2017GL074041.

Fatichi, S., C. Pappas, and V. Y. Ivanov. (2015). Modeling plant-water interactions: an ecohydrological overview from the cell to the global scale. *Wiley Interdisciplinary Reviews Water*, 3(3), 327–368, doi:10.1002/wat2.1125

Finger, R. A., Turetsky, M. R., Kielland, K., Ruess, R. W., Mack, M. C., & Euskirchen, E. S. (2016). Effects of permafrost thaw on nitrogen availability and plant-soil interactions in a

CONTRIBUTION OF OVERSTORY TRANSPIRATION IN A BOREAL PERMAFROST PEATLAND

- 352 boreal Alaskan lowland. *Journal of Ecology*, 104(6), 1542–1554.
- 353 <http://doi.org/10.1111/1365-2745.12639>
- 354 Gale, M. R., & Grigal, D. F. (1987). Vertical root distribution of northern tree species in relation
355 to successional status. *Canadian Journal of Forest Research*, 17, 829–834.
- 356 Garon-Labrecque, M.-E., Leveille-Bourret, E., Higgins, K., & Sonnentag, O. (2015). Additions
357 to the boreal flora of the Northwest Territories with a preliminary vascular flora of Scotty
358 creek. *Canadian Field-Naturalist*, 129, 349–367.
- 359 Good, S. P., Noone, D., & Bowen, G. (2015). Hydrological connectivity constrains partitioning
360 of global terrestrial water fluxes. *Science*, 349, 175–177.
- 361 Grosse, G., Goetz, S., McGuire, A. D., Romanovsky, V. E., & Schuur, E. A. G. (2016).
362 Changing permafrost in a warming world and feedbacks to the Earth system. *Environmental*
363 *Research Letters*, 11, 40201. <http://doi.org/10.1088/1748-9326/11/4/040201>
- 364 Helbig, M., Pappas, C., & Sonnentag, O. (2016a). Permafrost thaw and wildfire: equally
365 important drivers of boreal tree cover changes across the Taiga Plains, Canada. *Geophysical*
366 *Research Letters*. <http://doi.org/10.1002/2015GL067193>
- 367 Helbig, M., Wischniewski, K., Kljun, N., Chasmer, L. E., Quinton, W. L., Detto, M., &
368 Sonnentag, O. (2016b). Regional atmospheric cooling and wetting effect of permafrost
369 thaw-induced boreal forest loss. *Global Change Biology*, 1–19.
370 <http://doi.org/10.1111/gcb.13348>
- 371 Hopkinson, C., Chasmer, L. E., Sass, G., Creed, I. F., Sitar, M., Kalbfleisch, W., & Treitz, P.
372 (2005). Vegetation class dependent errors in lidar ground elevation and canopy height
373 estimates in a boreal wetland environment. *Canadian Journal of Remote Sensing*, 31, 191–
374 206. <http://doi.org/10.5589/m05-007>

CONTRIBUTION OF OVERSTORY TRANSPIRATION IN A BOREAL PERMAFROST PEATLAND

Iijima, Y., Ohta, T., Kotani, A., Fedorov, A. N., Kodama, Y., & Maximov, T. C. (2014). Sap flow changes in relation to permafrost degradation under increasing precipitation in an eastern Siberian larch forest. *Ecohydrology*, 7, 177–187. <http://doi.org/10.1002/eco.1366>

Jasechko, S., Sharp, Z. D., Gibson, J. J., Birks, S. J., Yi, Y., & Fawcett, P. J. (2013). Terrestrial water fluxes dominated by transpiration. *Nature*, 496, 347–50. <http://doi.org/10.1038/nature11983>

Jorgenson, M. T., Harden, J., Kanevskiy, M., O'Donnell, J., Wickland, K., Ewing, S., Manies, K., Zhuang, Q., Shur, Y., Striegl, R., & Koch, J. (2013). Reorganization of vegetation, hydrology and soil carbon after permafrost degradation across heterogeneous boreal landscapes. *Environmental Research Letters*, 8, 35017. <http://doi.org/10.1088/1748-9326/8/3/035017>

Kljun, N., Calanca, P., Rotach, M. W., & Schmid, H. P. (2015). A simple two-dimensional parameterisation for Flux Footprint Prediction (FFP). *Geoscientific Model Development*, 8, 3695–3713. <http://doi.org/10.5194/gmd-8-3695-2015>

Lafleur, P. M. (1992). Energy balance and evapotranspiration from a subarctic forest. *Agricultural and Forest Meteorology*, 58, 163–175.

Lara, M. J., Genet, H., McGuire, A. D., Euskirchen, E. S., Zhang, Y., Brown, D. R. N., Jorgenson M. T., Romanovsky V. E., Breen A., & Bolton, W. R. (2016). Thermokarst rates intensify due to climate change and forest fragmentation in an Alaskan boreal forest lowland. *Global Change Biology*, 22, 816–829. <http://doi.org/10.1111/gcb.13124>

Lawrence, D. M., Thornton, P. E., Oleson, K. W., & Bonan, G. B. (2007). The partitioning of evapotranspiration into transpiration, soil evaporation, and canopy evaporation in a GCM: impacts on land–atmosphere interaction. *Journal of Hydrometeorology*, 8, 862–880.

CONTRIBUTION OF OVERSTORY TRANSPIRATION IN A BOREAL PERMAFROST PEATLAND

398 <http://doi.org/10.1175/JHM596.1>

399 National Wetlands Working Group. (1997). *The Canadian wetland classification system*. (B. G.
400 Warner & C. D. A. Rubec, Eds.) *National Wetlands Working Group*. Waterloo, Ontario:
401 Wetlands Research Branch, University of Waterloo.

402 Olefeldt, D., Goswami, S., Grosse, G., Hayes, D., Hugelius, G., Kuhry, P., McGuire, A. D.,
403 Romanovsky, V. E., Sannel, A. B. K., Schuur, E. A. G., & Turetsky, M. R. (2016).

404 Circumpolar distribution and carbon storage of thermokarst landscapes. *Nature*
405 *Communications*, 7, 13043. <http://doi.org/10.1038/ncomms13043>

406 Oren, R., & Pataki, D. E. (2001). Transpiration in response to variation in microclimate and soil
407 moisture in southeastern deciduous forests. *Oecologia*, 127, 549–559.
408 <http://doi.org/10.1007/S004420000622>

409 Patankar, R., Quinton, W. L., Hayashi, M., & Baltzer, J. L. (2015). Sap flow responses to
410 seasonal thaw and permafrost degradation in a subarctic boreal peatland. *Trees - Structure*
411 *and Function*, 29, 129–142. <http://doi.org/10.1007/s00468-014-1097-8>

412 Quinton, W. L., Hayashi, M., & Chasmer, L. E. (2011). Permafrost-thaw-induced land-cover
413 change in the Canadian subarctic: implications for water resources. *Hydrological Processes*,
414 25, 152–158. <http://doi.org/10.1002/hyp.7894>

415 Schaefer, K., Lantuit, H., Romanovsky, V. E., & Schuur, E. A. G. (2012). Policy Implications of
416 Warming Permafrost. *United Nations Environment Programme Special Report*.

417 Schlesinger, W. H., & Jasechko, S. (2014). Transpiration in the global water cycle. *Agricultural*
418 *and Forest Meteorology*, 189–190, 115–117. <http://doi.org/10.1016/j.agrformet.2014.01.011>

419 Smith, S. L., Burgess, M. M., Riseborough, D., & Mark Nixon, F. (2005). Recent trends from
420 Canadian permafrost thermal monitoring network sites. *Permafrost and Periglacial*

CONTRIBUTION OF OVERSTORY TRANSPIRATION IN A BOREAL PERMAFROST PEATLAND

Processes, 16, 19–30. <http://doi.org/10.1002/ppp.511>

Sniderhan, A. E., & Baltzer, J. L. (2016). Growth dynamics of black spruce (*Picea mariana*) in a rapidly thawing discontinuous permafrost peatland. *Journal of Geophysical Research: Biogeosciences*, 121, 2988–3000. <http://doi.org/10.1002/2016JG003528>

Sonnentag, O., Talbot, J., Chen, J. M., & Roulet, N. T. (2007). Using direct and indirect measurements of leaf area index to characterize the shrub canopy in an ombrotrophic peatland. *Agricultural and Forest Meteorology*, 144, 200–212. <http://doi.org/10.1016/j.agrformet.2007.03.001>

Sprugel, D. G. (1983). Correcting for bias in log-transformed allometric equations. *Ecology*. <http://doi.org/10.2307/1937343>

Steppe, K., De Pauw, D. J. W., Doody, T. M., & Teskey, R. O. (2010). A comparison of sap flux density using thermal dissipation, heat pulse velocity and heat field deformation methods. *Agricultural and Forest Meteorology*, 150, 1046–1056. <http://doi.org/10.1016/j.agrformet.2010.04.004>

Tarnocai, C., Kettles, I. M., & Lacelle, B. (2005). *Peatlands of Canada Database*. Geological Survey of Canada.

Turetsky, M. R., Wieder, K., & Vitt, D. H. (2002). Boreal peatland C fluxes under varying permafrost regimes. *Soil Biology and Biochemistry*, 34, 907–912. [http://doi.org/10.1016/S0038-0717\(02\)00022-6](http://doi.org/10.1016/S0038-0717(02)00022-6)

Van Herk, I. G., Gower, S. T., Bronson, D. R., & Tanner, M. S. (2011). Effects of climate warming on canopy water dynamics of a boreal black spruce plantation. *Canadian Journal of Forest Research*, 41, 217–227. <http://doi.org/10.1139/X10-196>

Wang, K., & Dickinson, R. E. (2012). A review of global terrestrial evapotranspiration:

CONTRIBUTION OF OVERSTORY TRANSPIRATION IN A BOREAL PERMAFROST PEATLAND

- 444 observation, modelling, climatology, and climatic variability. *Review of Geophysics*, 50, 1–
445 54. <http://doi.org/10.1029/2011RG000373>
- 446 Wang, L., Good, S. P., & Caylor, K. K. (2014). Global synthesis of vegetation control on
447 evapotranspiration partitioning. *Geophysical Research Letters*, 6753–7657.
448 <http://doi.org/10.1002/2014GL061439>
- 449 Zoltai, S. C., & Tarnocai, C. (1975). Perennially frozen peatlands in the Western Arctic and
450 Subarctic of Canada. *Canadian Journal of Earth Science*, 12, 28–43.

CONTRIBUTION OF OVERSTORY TRANSPIRATION IN A BOREAL PERMAFROST PEATLAND

Table 1. A non-exhaustive literature review of reported values of black spruce sap flux density in the boreal region, including study location, soil type, permafrost presence (PF, Yes/No), tree sap flux density (J_s in $\text{gH}_2\text{O m}^{-2} \text{s}^{-1}$), diameter at breast height (DBH, cm), mean tree height (H , m), sapwood area (A_s , cm^2), stem density (D , stems m^{-2}), leaf area index (LAI, $\text{m}^2 \text{m}^{-2}$), air temperature ($^{\circ}\text{C}$) and mean annual precipitation (Prec., mm).

For Peer Review

CONTRIBUTION OF OVERSTORY TRANSPIRATION IN A BOREAL PERMAFROST PEATLAND

Study	Location	Soil	PF	n	J_s	DBH	H	A_s	D	LAI	T	Prec.
This study (SFS)	61°18'N, 121°18'W	peat	Y	22	8.0 ^a	10.6	-	-	-	-	-	88.8
This study (CHM)	61°18'N, 121°18'W	peat	Y	-	-	2.8	2.2	1.8	0.12	0.6	-2.7	390
Angstmann <i>et al.</i> (2013)	55°55'N, 98°21'W	peat	N	117	18.0 ^b	-	-	2.1	0.48	2.7*	0.8	439
Van Herk <i>et al.</i> (2011)	55°53'N, 98°20'W	mineral	N	16	61.5 ^c	5.5	-	2.7	0.20	3.1	-3.2	517
Ewers <i>et al.</i> (2005)	55°53'N, 98°20'W	mineral	N	38	86.7 ^d	6.9	6.9	-	0.39	3.6	0.8	439

* from Angstmann *et al.* (2012)

Superscripts refer to the time period over which mean J_s was calculated: ^a over 24 h period 0000 – 2359 h June - July, ^b over 12 h period 0600 – 1800 h; mean of all stands, ^c over 24 h period May – September; mean given for outside control trees (CO) only, ^d over 24 h period from 0500 h of one day to 0430 h the next day June - September; value of J_s reported given by Van Herk *et al.* (2011) for Ewers *et al.* (2005).

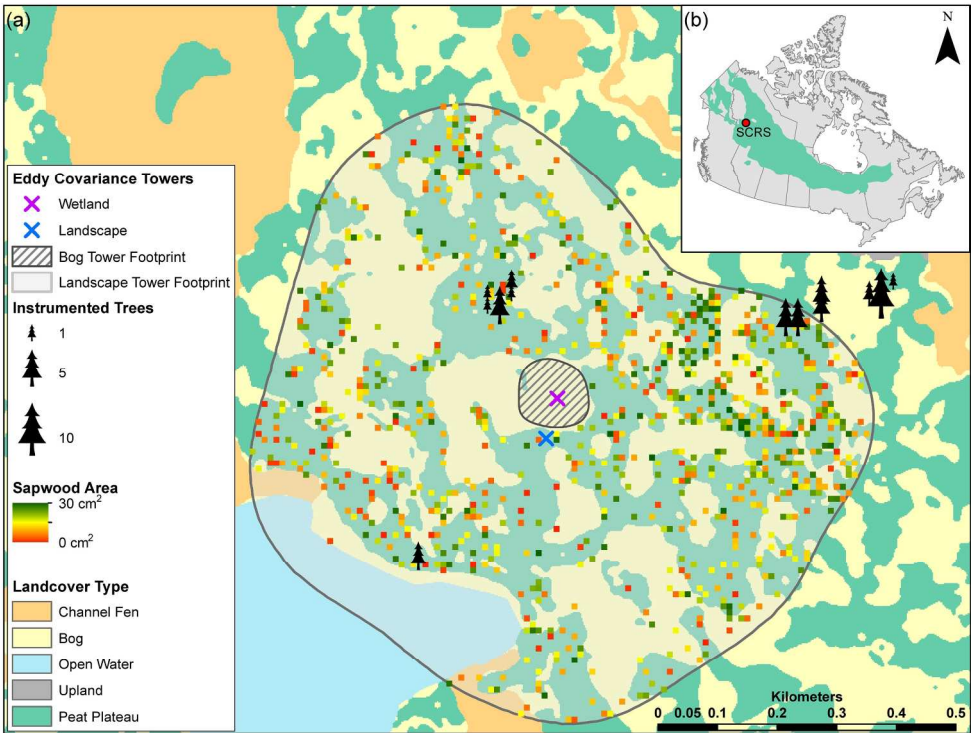


Figure 1. (a) Land cover classes at the study area (Chasmer *et al.*, 2014). The approximate locations and number of sap flow sensors are denoted by tree symbols of different sizes (note symbols appearing to be located in wetlands are the result of mapping limitations and are in fact located on plateaus). The locations of the landscape (ET_{LAND}) and wetland (ET_{BOG}) eddy covariance towers, with the solid and hatched shaded areas corresponding to the growing season flux footprint of the landscape and wetland towers respectively. The coloured cells illustrate the distribution of sapwood area (cm^2) derived from a 1 m resolution canopy height model and empirical allometric relationships resampled to 10 m resolution for figure's clarity. (b) Spatial extent of peatlands occurring within the boreal zone extracted from the Peatlands of Canada database (Tarnocai *et al.*, 2005) and consisting of landscapes characterized by permafrost-free channel fens, bogs and black spruce forested permafrost peat plateaus as described by (Zoltai and Tarnocai, 1975), and the location of the Scotty Creek Research Station (ScCr).

215x166mm (300 x 300 DPI)

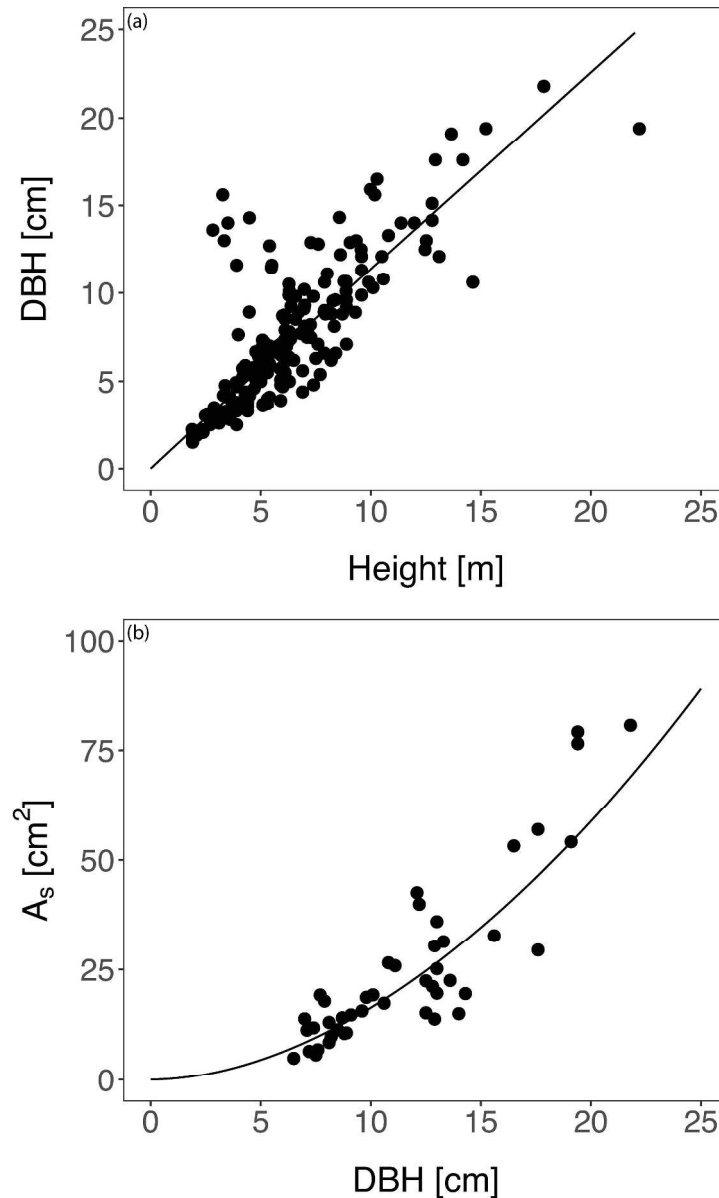


Figure 2. Allometric relationships between (a) tree height (m) and diameter at breast height (cm) based on 198 trees measured within the landscape eddy covariance footprint at Scotty Creek in 2012, 2015, and 2016 and (b) diameter at breast height (cm) and sapwood area (cm^2) based on 47 trees measured within the landscape eddy covariance footprint at Scotty Creek in 2016.

245x409mm (300 x 300 DPI)

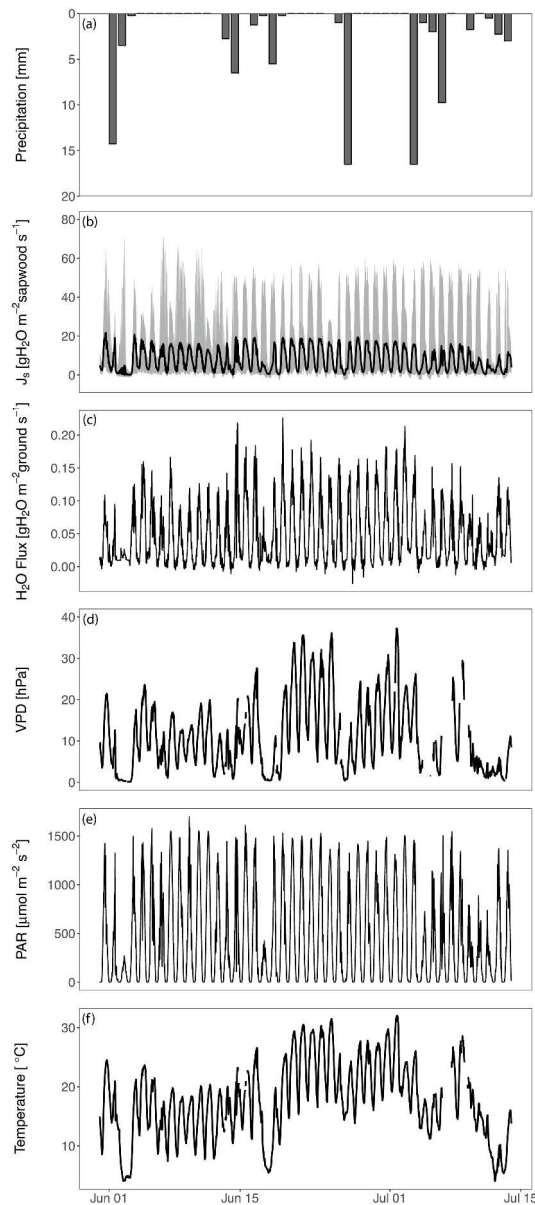


Figure 3. (a) Daily total precipitation at Scotty Creek over the 2013 study period. (b) Average ($n = 22$) J_s (black), and the minimum and maximum flux (grey). (c) Evapotranspiration of the forest-wetland landscape (ET_{LAND}), (d) vapour pressure deficit (VPD), (e) photosynthetically active radiation (PAR) and (f) 2 m air temperature recorded at the landscape eddy covariance tower over the study period.

535x1218mm (300 x 300 DPI)

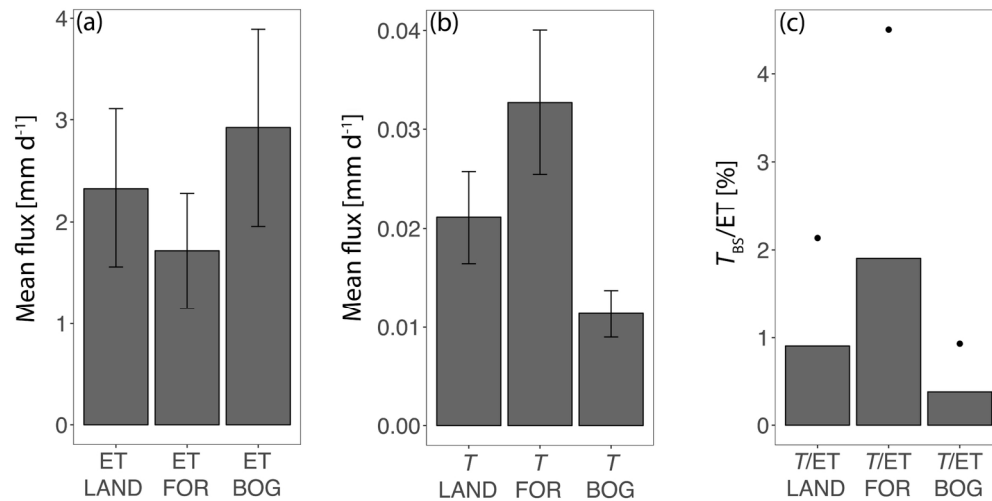


Figure 4. (a) Evapotranspiration (ET) for different landcover types, namely landscape (LAND), forest (FOR) and wetlands (BOG) for 2013 based on data from the landscape eddy covariance tower. Vertical lines correspond to \pm one standard deviation. (b) Upscaled landscape, forest and wetland transpiration (T_{BS}) using tree level sap flux density measurements. Vertical lines correspond \pm one standard deviation on the Monte Carlo uncertainty analysis. (c) The contribution of black spruce transpiration to evapotranspiration ($T_{BS}/ET \times 100\%$) for the different landcover types (e.g. landscape, forest, wetland) in 2013. Points represent the upper limit of T_{BS} assuming trees ≤ 5.4 cm at breast height are entirely composed of conducting tissue and trees > 5.4 cm at breast height have a sapwood area equal to half the cross sectional area.

158x79mm (300 x 300 DPI)

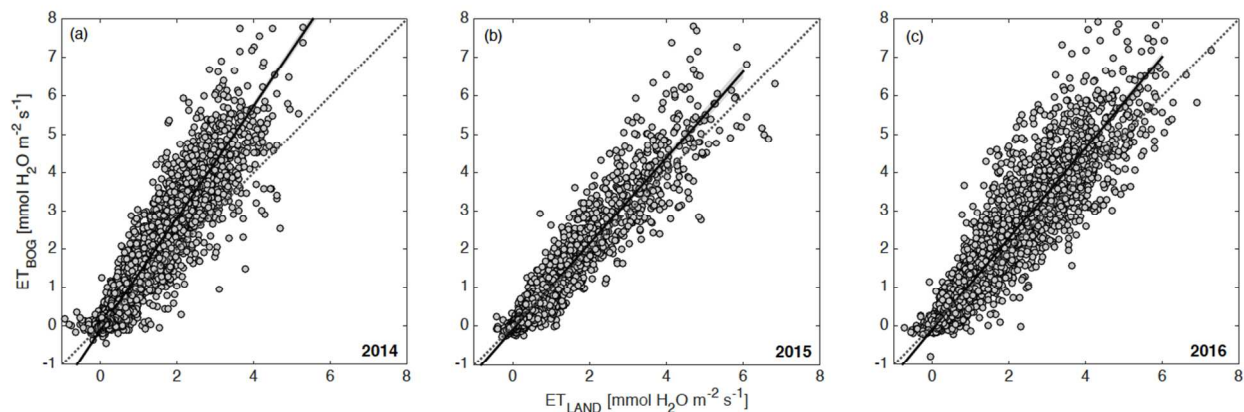


Figure S1. Relationship between landscape (ET_{LAND}) and wetland (ET_{BOG}) half-hourly water flux measured at Scotty Creek in (a) 2014, (b) 2015) and (c) 2016. The mean slope and intercept for the three-year period was used to calculate ET_{BOG} in 2013 when it was not measured.

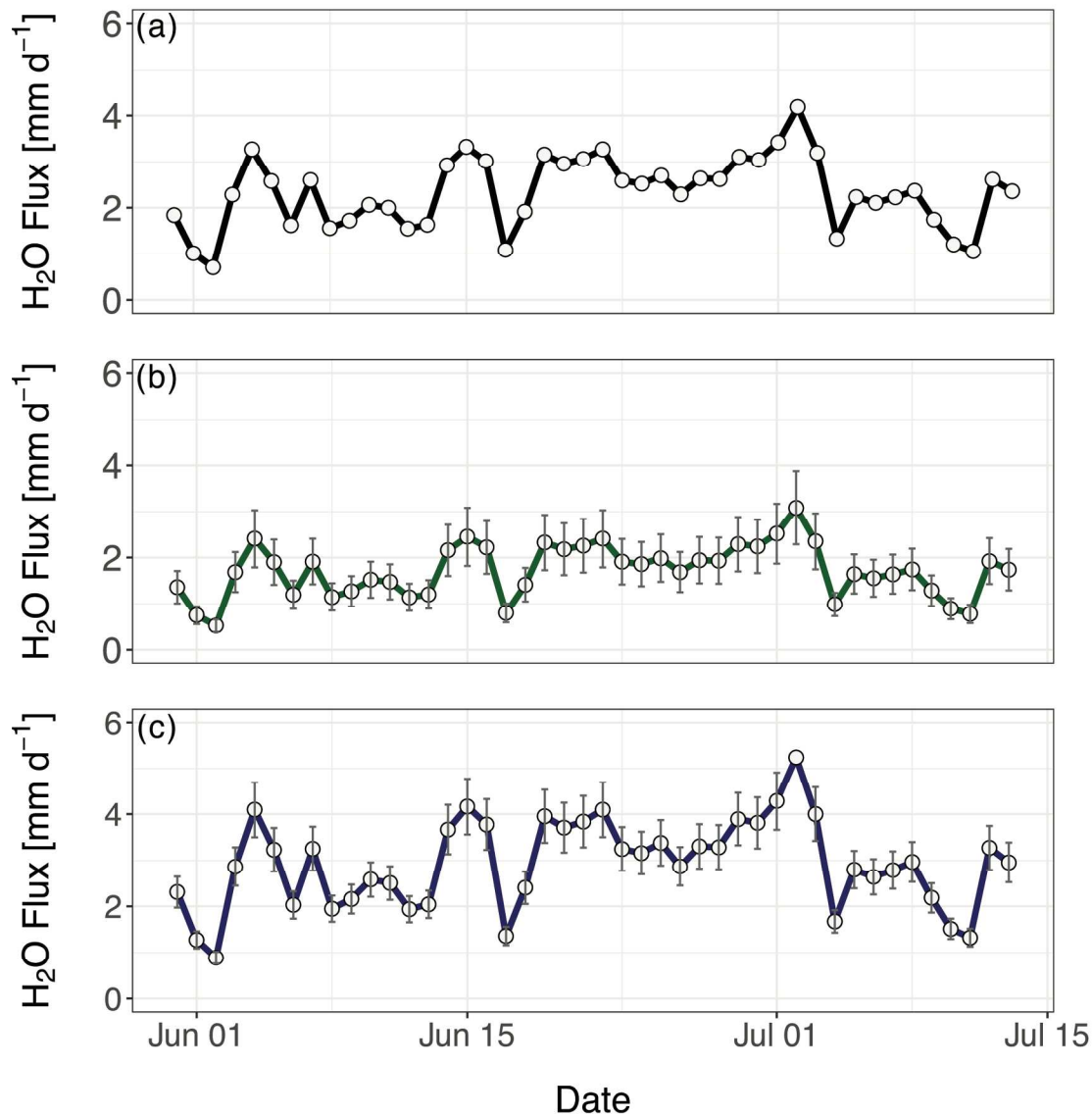


Figure S1. (a) Daily total landscape water flux (ET_{LAND}) measured at the landscape eddy covariance tower at Scotty Creek during the 2013 study period. (b) Daily total forest (i.e., plateau) water flux (ET_{FOR}) derived as the residual from ET_{LAND} and the wetland water flux (ET_{BOG}). Error bars refer to the confidence intervals of the derived residuals. (c) Daily total ET_{BOG} derived from the mean slope and intercept of the relationship between ET_{LAND} and ET_{BOG} 2014 – 2016 at Scotty Creek. Error bars refer to the confidence interval of the derived estimates.

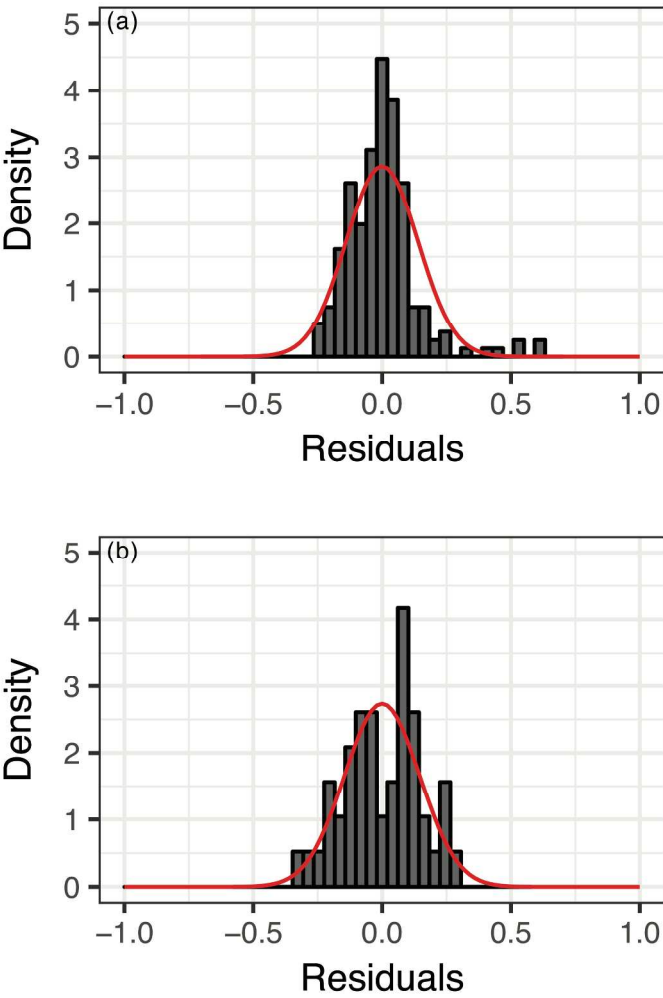


Figure S3: Probability density of the residuals resulting from the power function defining the relationship between (a) tree height and diameter at breast height and, (b) diameter at breast height and sapwood area at Scotty Creek. The residuals conform to a normal distribution.

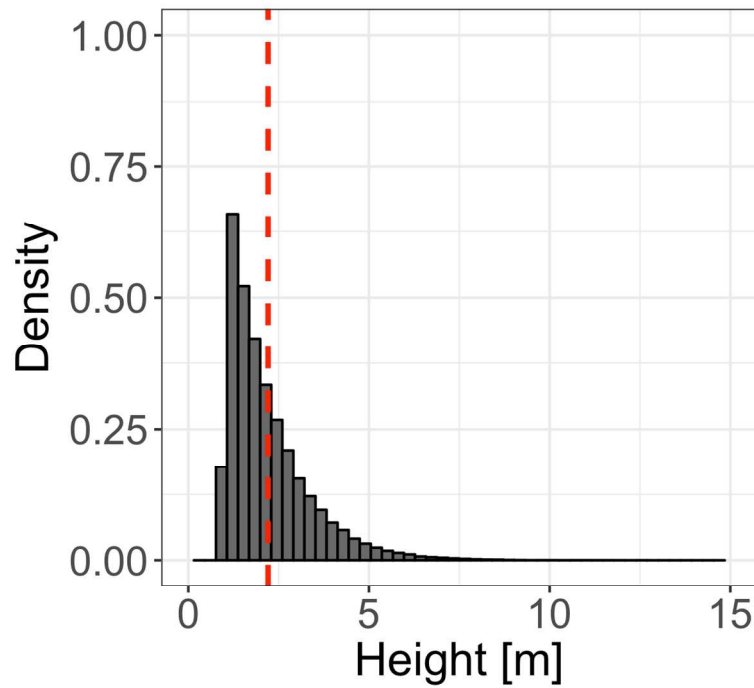


Figure S4. Distribution of tree height (m) within the landscape eddy covariance footprint at Scotty Creek, extracted from the CHM. Average tree height was determined to be 2.2 m \pm 1.2 (shown in red; minimum = 1.0 m, maximum = 12.6 m), and was not measured for the instrumented trees.

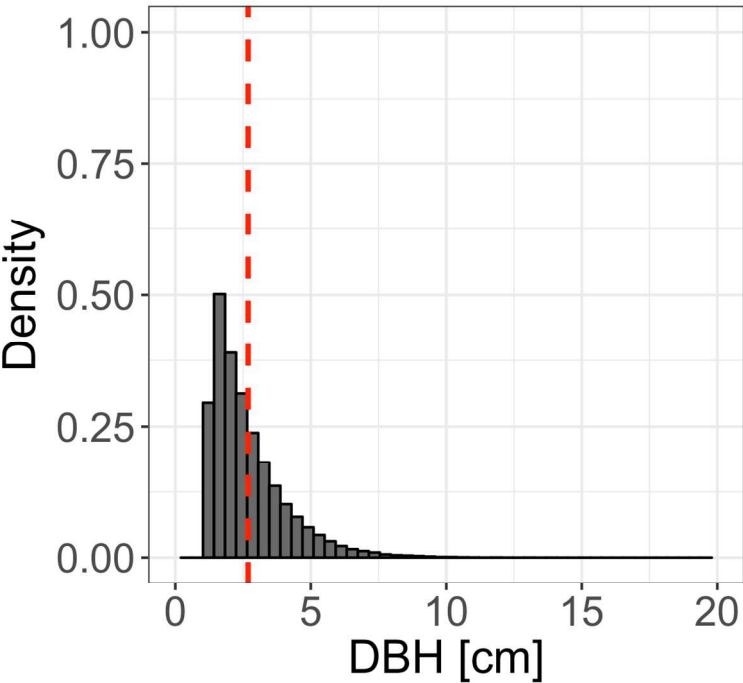


Figure S5. Distribution of DBH (cm) within the landscape eddy covariance footprint at Scotty Creek, estimated allometrically from the relationship between the measured trees and CHM. Average DBH was determined to be 2.7 cm +/- 1.4 (shown in red; minimum = 1.2 cm, maximum = 15.1 cm), in contrast to 10.6 cm +/- 0.5 for the instrumented trees.

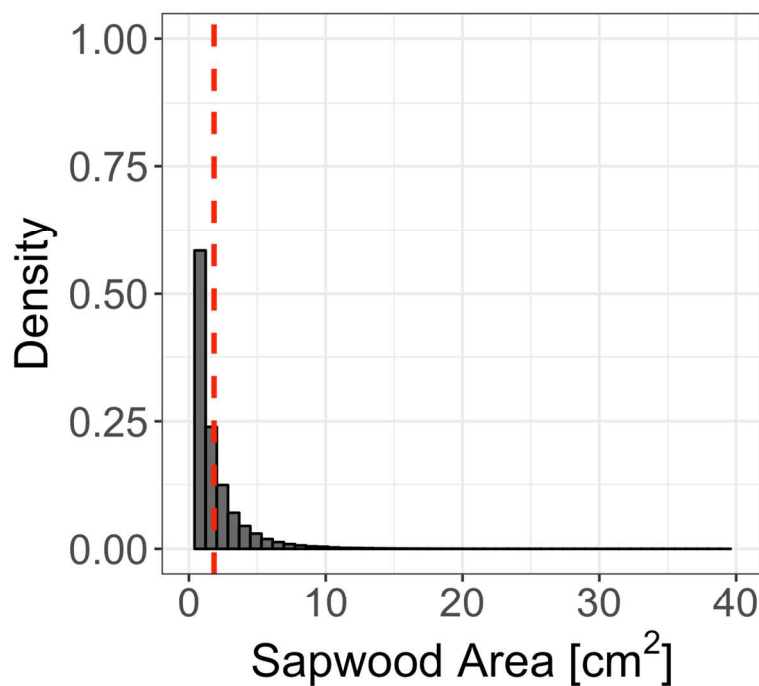


Figure S6. Distribution of sapwood area (cm^2) within the landscape eddy covariance footprint at Scotty Creek, estimated allometrically from the relationship between the measured trees and CHM. Average sapwood area was determined to be $1.8 \text{ cm}^2 \pm 2.0$ (shown in red; minimum = 0.4 cm^2 , maximum = 37.1 cm^2), and was not measured for the instrumented trees.